

# Uncertainty as Drilling Moratorium Expires

A major oil company looks to move forward, as local stakeholders express concerns.

By Arin Mikailian

A group of Culver Crest residents and some of their neighbors from abutting communities have drafted their own community standards district, in the hopes that it will supplant a similar document presented by an oil company seeking to increase its drilling in a nearby oil field.

The announcement of the Greater Baldwin Hills Alliance Community Standards District, on June 19, three days before a moratorium on oil drilling by Plains Exploration & Production Company expired.

At the head of the drafting of the document is 29-year Culver Crest resident John Kuechle.

Like many of his neighbors who live in the Crest, Kuechle and his family were awakened at 3 a.m. on Jan. 6, 2006, when a gas leak from the nearby Baldwin Hills oil field seeped into the neighborhood.

Some stayed home, while others like Kuechle were so bothered by the odor of the gas that they left their homes and spent the remainder of the night sleeping in their cars parked in the

downtown area.

Despite no one being harmed, Kuechle has since closely followed PXP's local activity.

Now, with the moratorium expired, PXP has expressed interest in adding about 1,075 new wells in the next 20 years in the Baldwin Hills oil field.

However, after recently reaching an agreement with L.A. County, PXP agreed not to apply for drilling any new oil wells until Oct. 31.

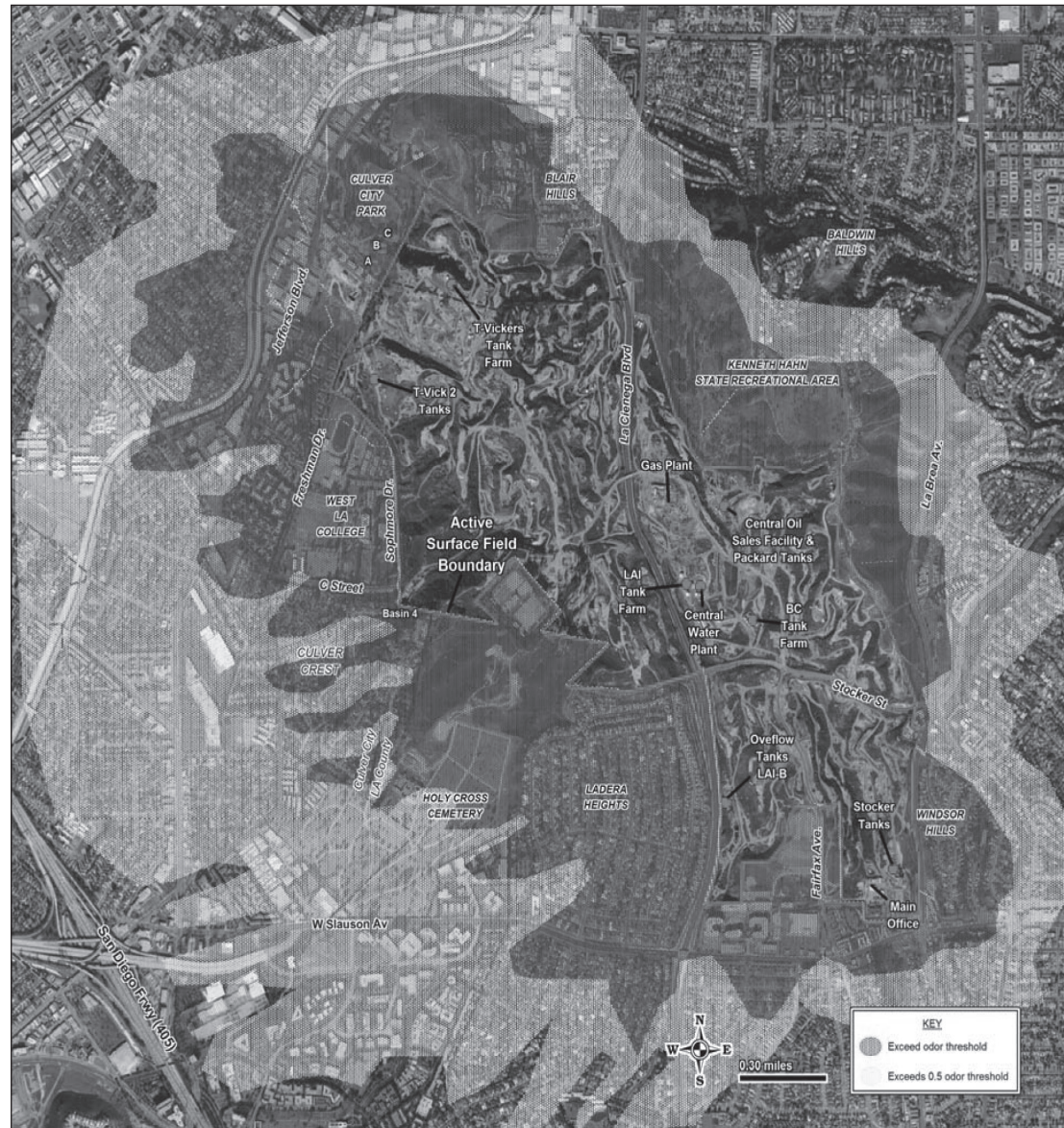
But what caught the attention of Kuechle and his peers was the fact that the environmental impact report, conducted by a consultant hired by Los Angeles

PXP page 5

# Council Moves to Stall New Wells

By Arin Mikailian

The Culver City Council unanimously agreed Monday to



COUNTY OF LOS ANGELES

(Left) A map highlights areas that could be affected by a potential gas leak from oil wells owned by Plains Exploration & Production Company, including new wells the company hopes to drill in the future. The original map (above), which indicates that some Culver City schools might also be affected, was cropped before being added to a recent environmental impact report. To view the maps and the report, log on to [www.wavepublication.com](http://www.wavepublication.com).

